

CO2 meter **HT-501**

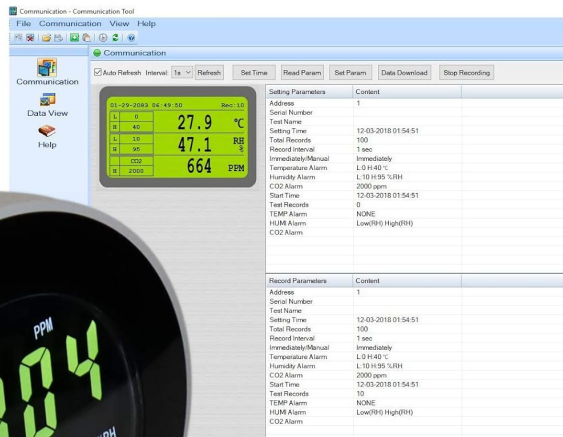
Carbon dioxide meter is widely used in factory,workshop, green house,clean room,industry and agriculture,wine bar,hotel,hospital,shop market,airport,railway station, entertainment hall and moive theater etc.

Specification

Large LCD Display	Color display with backlight
Logger mode	key start/stop,Immediately,Schedule,Real-time&Roll-over
Carbon Dioxide(CO2)	
Range	0~9999PPM
Accuracy	±70ppm or ±3% rdg (0~5000PPM)
Response time	1s
Temperature Range	-10~70°C(14~158°F)
Resolution	0.1°C/°F
Accuracy	±0.3°C(10~50°C) ,others ±1.2°C
Humidity Range	0.1~99.9%RH
Resolution	0.1%
Accuracy	±3%(10~90%)
Logging Memory	12700
Operating Condition	0~50°C,0~85%RH (No Conden Sation)
Storage Condition	-20~60°C,0~99%RH (No Conden Sation)
Sensor life	15 years in normal comm
Storage temp	-20~60°C,0~90%RH (No Conden Sation)
Battery	3.7V rechargeable Li-ion polymer battery
Size	107×107×59mm



HT-501



LINE ID: @neonics

