

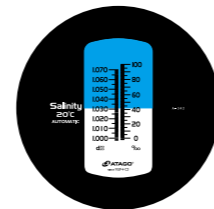
# MASTER Series <Special Scales>

## Seawater



Sea Water

α		M	
ATC & Water Resistant Seawater Refractometer		Seawater Refractometer	
MASTER-S/Mill α	Cat.No.2491	MASTER-S/Mill M	Cat.No.2493
Accuracy: [1] ±2‰ *±1‰ [2] ±0.001*±0.0005 (10 to 30°C)			
Range: [1] Salinity 0 to 100‰ Min.scale 1‰ [2] Specific gravity 1.000 to 1.070 Min.scale 0.001			
Size and weight: 3.2×3.4×20.7cm, 110g			



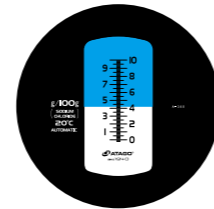
MASTER-S/Mill α

## Salinity



High Accuracy NaCl

ATC & Water Resistant Salinity Refractometer		Salinity Refractometer	
MASTER-S10 α	Cat.No.2471	MASTER-S10M	Cat.No.2473
Accuracy: ±0.2g/100g *±0.1g/100g (10 to 30°C)			
Range: Sodium chloride 0.0 to 10.0g/100g Min.scale 0.1g/100g			
Size and weight: 3.2×3.4×20.3cm, 105g			



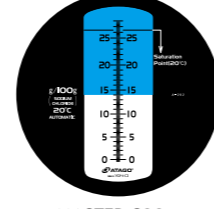
MASTER-S10 α

## Salinity



Wide Range NaCl

ATC & Water Resistant Salinity Refractometer		Salinity Refractometer	
MASTER-S28 α	Cat.No.2481	MASTER-S28M	Cat.No.2483
Accuracy: ±0.2g/100g *±0.1g/100g (10 to 30°C)			
Range: Sodium chloride 0.0 to 28.0g/100g Min.scale 0.2g/100g			
Size and weight: 3.2×3.4×20.3cm, 105g			



MASTER-S28 α

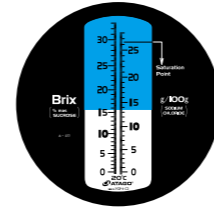
## Brix & Salinity



NEW

Dual Scale

Brix & Salinity Refractometer			
Range		MASTER-BX/S28M	
[1] Brix	0 to 33%, Min.scale 0.2%	Cat.No.2484	
[2] Sodium chloride	0 to 28g/100g Min.scale 0.2g/100g	Size and weight: 3.2×3.4×20.3cm, 105g	



MASTER-BX/S28M

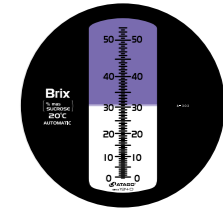
## Milky sample



Milk

NEW

Range		Milky sample Refractometer	
Brix 0.0 to 53.0%	Min.scale 0.5%	MASTER-53S	Cat.No.2355
Accuracy: ±0.5% *±0.25%			
Size and weight: 3.2×3.4×16.8cm, 130g			



MASTER-53S

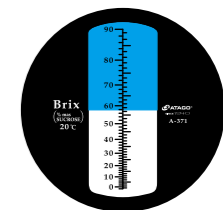
## Wide Brix range



Wide Brix

NEW

Range		Water Resistant & High Temperature Refractometer	
Brix 0.0 to 90.0%	Min.scale 1.0%	MASTER-500	Cat.No.2363
Size and weight: 3.2×3.4×16.8cm, 130g			



MASTER-500

## Vegetable & Fruit



Vegetable

NEW

Range		Vegetable & Fruit Refractometer	
Brix 0.0 to 53.0%	Min.scale 0.5%	MASTER-AGRI	Cat.No.2462
Size and weight: 3.2×3.4×16.8cm, 130g			



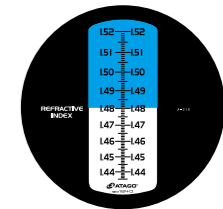
Optional SUPER EXTRACTOR Part No. RE-29401

## Refractive Index



nD Scale

Range		nD Refractometer	
Refractive Index (RI) 1.435 to 1.520	Min.scale 0.001	MASTER-RI	Cat.No.2612
Size and weight: 3.2×3.4×16.8cm, 130g			



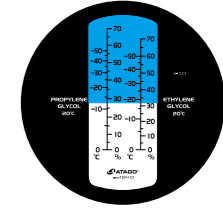
MASTER-RI

## Brine



Dual Scale

Range		Coolant Refractometer	
[1] Propylene glycol 0 to 70%, Temp 0 to -50°C Min.scale 5%, 5°C		MASTER-BR	Cat.No.2930
[2] Ethylene glycol 0 to 70%, Temp 0 to -50°C Min.scale 5%, 5°C		Size and weight: 3.2×3.4×16.8cm, 90g	



MASTER-BR

Digital Bench-top Refractometer  
Digital Portable Refractometer (Standard)  
Analog Portable Refractometer  
pH Meter EC Meter  
Soil Moisture Meter  
Wine  
Acidity Meter  
Salt Meter  
Digital Portable Refractometer (Special)  
In-line/process Refractometer  
Analog Bench-top Refractometer  
Clinical  
Polarimeter  
Viscometer