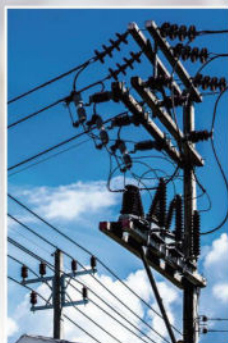


Thermal Imager is designed for Non-contact detection and calculation of apparent surface temperature, and the thermal image creation is based on the temperature variation. Imager Thermometers provide fast and accurate readings for most surface temperature measurements with TFT color LCD display & Imager Video format. Built for tough work environments, these high-performance, fully radiometric imagers are ideal for troubleshooting electrical systems, electro-mechanical equipment, process equipment, HVAC/R equipment and others.



Hidden fire source search



Power supply equipment



Heating equipment inspection



Transformer line inspection



Function

- *With small volume, the product is easy to operate and has strong function. it is the ideal selection for electric power, electronic manufacturing, Industrial inspection and other fields.
- *With a visible light camera. The thermal images and visible images are stored in the device and can be read through USB.
- *The radiation coefficient may be adjusted to increase the measurement accuracy of objects with half reflection surface.
- *The highest temperature and lowest temperature cursor may guide the users to the areas with highest and lowest temperature of the thermal images.
- *The selectable color palette.

Application

- ▶ The inspection of electric equipment, lines of transmission and transformers;
- ▶ Search of concealed fire source in fire control;
- ▶ Personnel search and rescue and commanding at fire site;
- ▶ Make analysis of the leakage position and heat loss of thermal pipeline and heating equipment;
- ▶ Determine the position of heating failure of the operation train;
- ▶ Analysis of rationality of wire of microelectronic industry;
- ▶ Night monitoring of security departments.

	WT3160	WT3220	WT3320
Infrared image resolution	160×120	220×160	320×240
Temperature measurement range	-20°C~450°C (-4°F~842°F)	-20°C~450°C (-4°F~842°F)	-20°C~300°C (-4°F~572°F)
FOV/Shortest focal length	35°×26°/ 0.5m	35°×26°/ 0.5m	56°×42°/ 0.5m
Measurement accuracy	±2°C/ ±2% (if over 300°C, accuracy is ± 5%)		±2°C/ ±2%
Display screen	2.8-inch full-view TFT display		
Visible image resolution	300,000 pixel		
LCD resolution	320×240		
Thermal sensitivity	70mk		
Emissivity	Adjustable from 0.01 to 1.00		
Frame rate of thermal images	9Hz		
Wavelength coverage	8-14um		
Focus mode	Fixed		
Color palette	Rainbow, iron oxide red, cold color, black & white, white & black		
Storage capacity	Built-in 3G (above 20 thousand image stored)		
File format	JPG		
USB	Micro USB 2.0		
Power Supply	Built-in chargeable 18650 battery		
Working Time	2-3 hours		
Automatic power-off time	Selectable: 5 minutes/20 minutes/not power off automatically		
Setting command	Unit, language, date, time, information		
Language	English \ Chinese \ Italian \ German		
Operating temperature	0°C ~ 45°C		
Storage temperature	-20°C ~ 60°C		
Humidity	< 85%RH		